



Panama

Earthquake

21 March 2025

Final Event Briefing

31 March 2025

1 INTRODUCTION

A magnitude 6.2 earthquake occurred at 14:50:51 (UTC) on 21 March 2025, located at 121.4 km (75.5 mi) NNW of Burica, Chiriquí Province, Panama; 147.9 km (91.9 mi) N of Pedregal, Chiriquí Province, Panama and 146.1 km (90.8 mi) NNW of Puerto Arguelles, Chiriquí Province, Panama. Final estimates from the United States Geological Survey (USGS) located the epicentre of the event at 7.049°N, 82.397°W, and at a depth of 10 km (6.21 mi) – Figure 1.

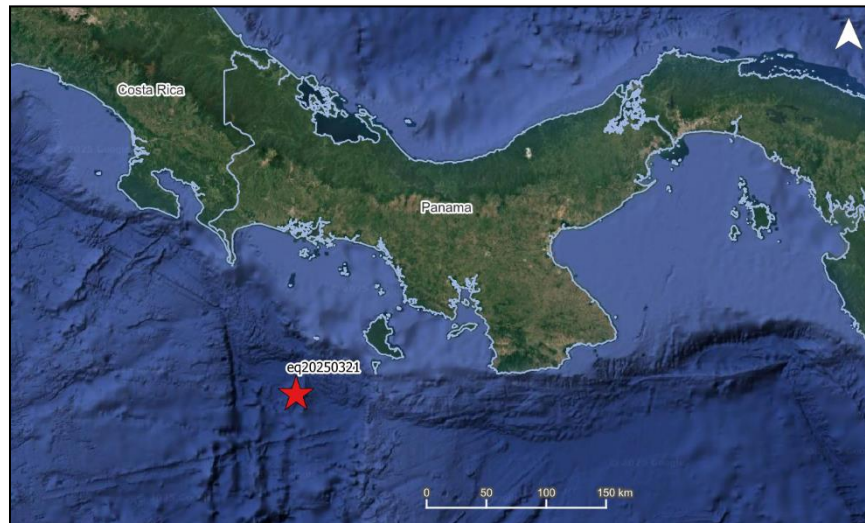


Figure 1 Information from the Earthquake Hazards Program of the United States Geological Survey regarding the earthquake event on 21 March 2025. Source: USGS¹

Panama was the only CCRIF member country where peak ground acceleration, computed with the SPHERA model, was greater than 0.03 g for this earthquake.

Final runs of CCRIF’s loss model estimated no government losses for Panama and therefore no payout is due under the earthquake policy.

2 CCRIF MODEL OUTPUTS

Under CCRIF’s loss calculation protocol, a report using the CCRIF SPHERA model is produced for any earthquake with a magnitude greater than or equal to 5.0 that occurs within the region monitored by CCRIF and which generates a peak ground acceleration of at least 0.03 g in one or more grid cells of at least one CCRIF member country. Based on the SPHERA footprint for this earthquake, peak ground acceleration of up to 0.1 g was estimated in Panama (Figure 2), but under the SPHERA model, the earthquake generated a loss estimation of zero.

¹ Download Event KML, United States Geological Survey, review date: 31 March 2025, available at: <https://earthquake.usgs.gov/earthquakes/feed/v1.0/detail/us7000p1lt.kml>

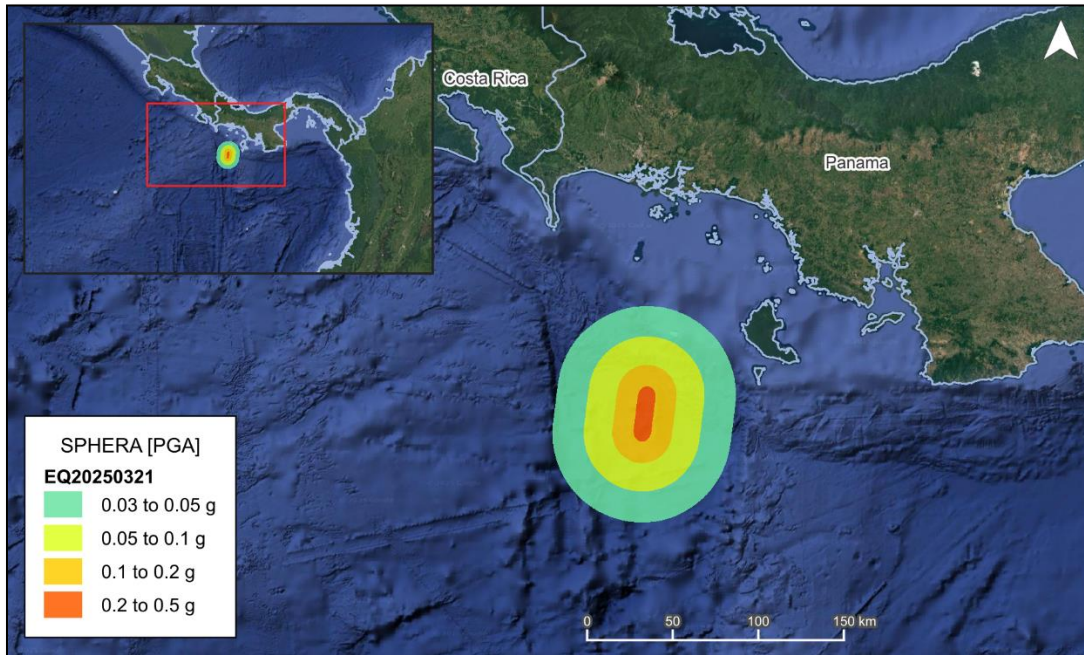


Figure 2 Map showing the peak ground acceleration in Panama computed using the SPHERA model following the magnitude 6.2 earthquake² on 21 March 2025
Source: *USGS & CCRIF SPHERA EQ Model*.

3 IMPACTS

At the time of writing this report, there was no available information on damage or loss in Panama due to this earthquake.

According to the USGS “Did You Feel It?” online tool in less than 150 km (93.20 mi) radius 6 persons felt the earthquake as "weak shaking with no damage" (Mercalli intensity III); in a radius greater than 150 km, 9 person felt it as "Light/moderate shake with very light damage (Mercalli intensity IV-V) and in a radius greater than 170km (105.63mi) more people felt it like a weak shake with no damage (Mercalli intensity III).

4 TRIGGER POTENTIAL

Final runs of the CCRIF loss model for peak ground acceleration produced no government losses for Panama. Therefore, no payout is due under this country’s earthquake policy.

For additional information, please contact CCRIF SPC at: pr@ccrif.org

² United States Geological Survey (USGS), review date: 31 March 2025, available at: [M 6.2 - 123 km SSE of Burica, Panama](#)
